



Not the... Spoke 'n Word

Volume 2 No. 3

Newsletter

August 2000

A Mixed Bag this Edition. The promised race report, a competition, tantalising tales of new acquisitions and sources of spares, things to buy and a trike conversion to wonder at, two gifted Club cycles plus the mandatory **Attendance** and **Finacil Statistics** and pearls from -

The Meeting 17th July - due to holidays etc attracted 7 members. But we had a good evening, unfurled the **New Club Banner** and ate lots of biscuits. We lack a rousing Song. "We love to go a cycling along the Mountain track" -

Anybody???. A healthy Balance Sheet stands at **\$930.20** with another \$750 promised from MRD for the Tunnel opening. The vexing question of Public Liability Insurance continues. Getting more quotes and defining our Duty of Care to the public still has to be tackled. Some relief. PLI has now been moved to the Executive committee along with the Strategy for deciding which events we attend and how many and where Club rides should go. The meeting of the Exec took place on 2nd Aug. This should we hope streamline our normal meetings to the more bicyclery topics. Reports on the deliberations will be made as necessary either here or at future General Meetings.

The Show and Tell

Merv fielded two machines. **The Fairy Cycle** we had seen at the pin stipe evening now painted and assembled with 10inch wheels, solid tyres and a 1968 -3spd SA with back pedal braking! It probably should have inflatable tyres and lacks a front mudguard. The Grandies love it. Next was a **Dahon III** American folding cycle with small wheels to which had been grafted a Ken Rogers single side drive rear axle and bracings - converting it into a **Tricycle**. The original 3spd Shimano hub was retained the spokes/rim removed and a sprocket welded to the spoke flange. A chain goes from this to drive the LHS axle drive sprocket. Clear? The Internet quotes £245 +gst for a similar conversion axle/bracings. Merv has fitted new mudguards/wheels and improved the very worn steering head bearings. Straight ahead is not easy, right a bit easier but left turns require the technique of a sidecar driver -freewheel, lean in and pray. **Dave B** Had a Danish plastic frame and wheels bicycle with hammock seat, steep head angle built in stand, Makers name? on Drive Sproket = Ogel. Anybody know this one?

Forth Coming Events - Two new venues have joined the list on the **Events Planner** - "The Lilley Festival" in **Gingin 9th Sept.** a static display of our bicycles and **Ellenbrook 22nd Oct.** the chance to join a worthy Charity Ride .

Items for Sale or Swap

Phil has details of someone who can make **Small Leather Saddle Bags** for \$20 in brown or black. Perfect for the puncture kit and tools or the Mobile phone.

Craig Williams - a possible new member has

Lots of Old Bike Parts to Swap

Contact **The Old Bakery, Brookton. 9642 - 1368**

The Competition.

To get your name in the Newsletter and a mystery prize - How many West Australian Bicycles Manufacturers can you name? Answers on a piece of paper to **Ken Ward** at the meeting 21st Aug.

Attractions for The Next Meeting 21st August see:-

The Club Bicycles - **Destry Schrock** has very kindly donated a Dutch ladies cycle and a Gent's Australian cycle of the 1950/60 and **David Clark** has agreed to be custodian of these machines and bring them on the 21st to meet us. In appreciation Merv has given **Destry** an old rusty c.1900 bicycle for his shop. "Sounds right" said **Dave C**.

Merv has been out there wheeling and dealing and has lots of interesting cycle parts and whole cycles, one with more than two seats. Find out how many at the next meeting.

Not to be out done **Dave C** has a new line in **Rubber**.

Brake blocks, black only for the older more discerning bicycle.

David says he may also be persuade **Itera** to come to the next meeting. **She 18 and Swedish**.

Phil has had some luck at a **Swop Meet** - what???

To find out - get your bike in gear and wobble on down.

STOP PRESS

PLEASE NOTE *The date of the Guildford Historic Tour Club picnic and Museum visit is now the 20th August.*

For the **Race Against the Train** report see attachment.

Next Meeting : Monday 21st August at 7.00pm
VCC Club Rooms 6b Hickey Street, Ardross.
Meetings are held on the third Monday of the month

Correspondence to :- The Editor **Dave Brown**.
9 Prestwick Green, Meadow Springs, MANDURAH 6210. WA
Tel: 08 9581 9084 Email :- rebndj@opera.iinet.net.au

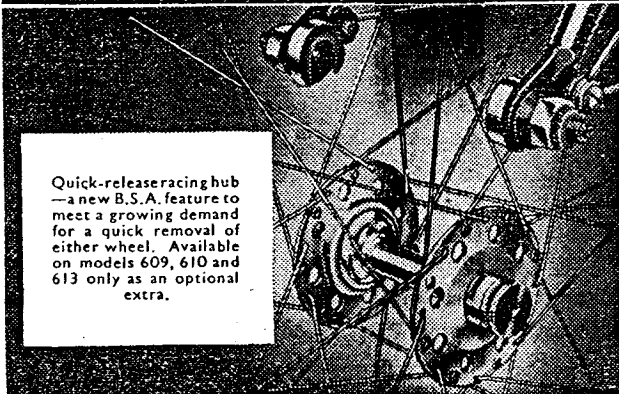
WAHCC Committee:- President **Merv Thompson. 9450-2579** Vice President **Alan Naber. 9332-3956**
Treasurer **Peter Smith. 9405-7561** Secretary **Dave Brown. 9581-9084** Historian **Ken Ward 9364-3601**
Events Coordination **Phil Harris 9459-7146**



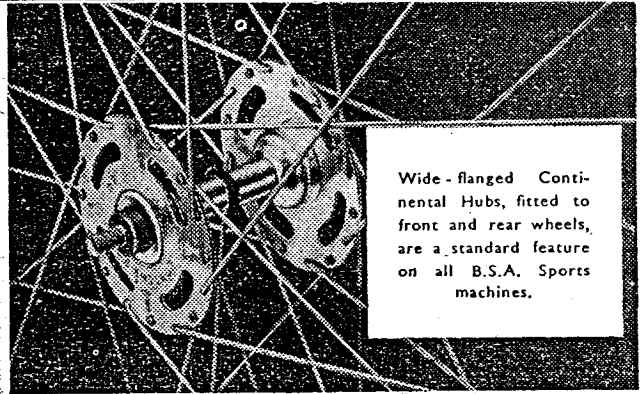
Bob Mailland **SAYS**
THE NEW BSA'S
ARE BETTER THAN EVER

First, as always with the finest, the new B.S.A.s give to the ordinary cyclist, the club-rider and the racing man the features and improvements they have always wanted.

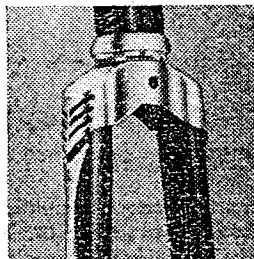
NEW PACE-SETTING FEATURES



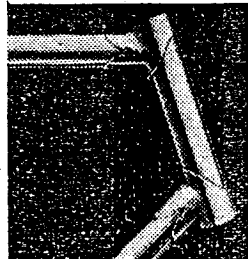
Quick-release racing hub—a new B.S.A. feature to meet a growing demand for a quick removal of either wheel. Available on models 609, 610 and 613 only as an optional extra.



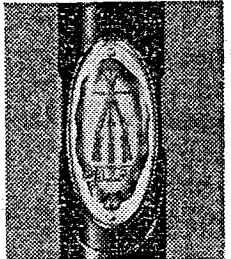
Wide-flanged Continental Hubs, fitted to front and rear wheels, are a standard feature on all B.S.A. Sports machines.



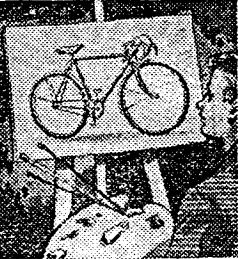
An attractive crown cover and arrow ornamentation on fork greatly enhance the appearance of B.S.A. machines.



This new pattern lug is one of the new features on models 605, 624, 619 and 629, and is one of the outstanding design improvements to these popular machines.



A new and attractive plastic head badge is fitted to all coloured machines. A chromium-plated die cast badge is standard on black machines.

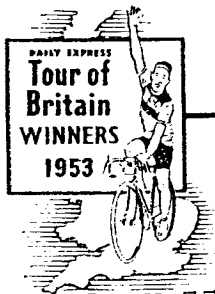


Superb design and craftsmanship are the essence of B.S.A. Bicycles which are manufactured in the most modern bicycle factory in the world.



Brooks saddles are standard on all Sports machines and Lycett saddles on all Roadster machines.

The 1954 range of B.S.A. Bicycles with their outstanding specifications cannot fail to meet with the approval of even the most discriminating rider.



Lead the way on your



B.S.A. CYCLES LTD., 9, WAVERLEY WORKS, BIRMINGHAM, 10

Send this coupon NOW for the new B.S.A. Bicycle Catalogue.

NAME

ADDRESS

Reginald C. Croft 5/2000

Western Australian Historical Cycle Club **Events Planner**

August 2000 issue

WAHCC meetings occur on the Third Monday of each month and are held at :- The VCC Club Rooms, 6b Hickey Street, Ardross. (Old Wireless Hill Houses)

Please Note :- Hickey Street divides soon after the start - at the bend - take the small road on the right.

Event	Date	Location	Contact	Comments
Club Ride/Part guided Tour with Picnic and Private Museum visit	Sunday 20th August 10am gathering	Historic Guildford Starting from Ross's Hardware Crn James & Wellman Streets	M Thompson 9450-2579	Tour followed by Picnic in the grounds and visit to private collection of cars and bicycles .
Monthly Meeting	21st August	VCC Club Rooms	Dave Brown 9581-9084	Show us your plastic DC
Lilly Festival	9th September 9am - 4pm	Gingin	Phil Harris 9459 7146	Fair & Market Display of our bicycles requested
Monthly Meeting	18th September	VCC Club Rooms	Dave Brown 9581-9084	More revelations from Merv's new treasures?
Kalamunda "The Way It was" Hands on event	Tues. 3rd October 12-4pm	Kalamunda History Village	David Clark 6278-1048	Event for Children Merv's PennyFarthing in transport section
Family Bike & Hike Day	22nd Oct Register 3pm Start 3.30pm	Ellenbrook	Phil Harris 9459 7146	Charity ride of 2 or 20Kms
Penny Farthing Race	Saturday 4th Nov.	Pinjarra	Tom Atkinson 9531-1243	
Possible State Championship PennyFarthing Races	Sunday 12th Nov	Midland Festival	Joe Cox 9531-1368	Possible Annual Event by WA Cycling Federation
Guildford Celebrations	1st April 2001	Stirling Square Guildford	TBA	Parade of all club bicycles
Pinjarra Festival	First Weekend in June 2001	Edenvale House Pinjarra	Tom Atkinson	They want us back for another display of our cycles

The Race Against The Train.

To set the Scene

The Race of **Pedal Power v Steam Power** is from Pinjarra to Dwellingup some 25kms by road. The route is flat for about the first 20km when it starts to climb to the escarpment which is about 250m above sea level at Dwellingup. The point where as Tom puts it "P/F were walked" slows down a modern 2lt car. This section would puff anybody walking without having to push a P/F as well! The steam train route broadly follows the road on the flat but on entering the hills the rail track has to follow a much gentler gradient to prevent wheel spin /brake fade by forming a series of loops which traverse the road frequently in the form of ungated crossing. The Railway was designed to bring Jarra logs down to Fremantle from the forrests around Dwellingup and now only operates in the Winter as a tourist attraction.

The Race Report.

Pedal Power v Steam Power

Pinjarra Festival - Saturday 3rd June 2000

Nineteen riders on conventional bikes, two penny farthings and one Steam train took part in this event. Racing from Pinjarra to Dwellingup. A stiff easterly breeze prevailed throughout the event making the ride more difficult. Tom and Joe on the P/Fs set off with a 30 minutes start on the limit riders on conventional bikes. The limit riders were Jan Fitzgerald, Don Stone and Athol Benzley. The train also started at this time. Five minutes after the train had left were Tony Van Merwyk, Bob Martin, Sue Hastie, Wally Box and last years winner Brett Snowden

Eight minutes after the train were Peter Hastie, Darren Lee, Tom Willis, Ian Partington and Don Vidler. On twelve minutes the final group of Brian Buck, Colin Luff, Ron McArthur and Steve Dodd set off with a hard task in front of them.

On the steep section (200meters) of the long hill the P/Fs were walked and at the second rail crossing remounted. It was a long slow drag to the top with some gusts of wind blowing Tom and Joe into the middle of the road. At the top of the hill it was expected that the conventional cyclists would overtake the P/Fs but this was not the case. So to the cheers of the crowd a P/F was first (with Tom aboard) Don Vidler about a minute behind came second. The Train pulled into the station as the third to eight place rider crossed the finishing line. The organiser had laid on a Sausage Sizzle in the park adjacent to the Station for the riders. Tom was presented with his winners prize and thanked the Organisers and all who had taken part and hoped that The Race would become an Annual event.

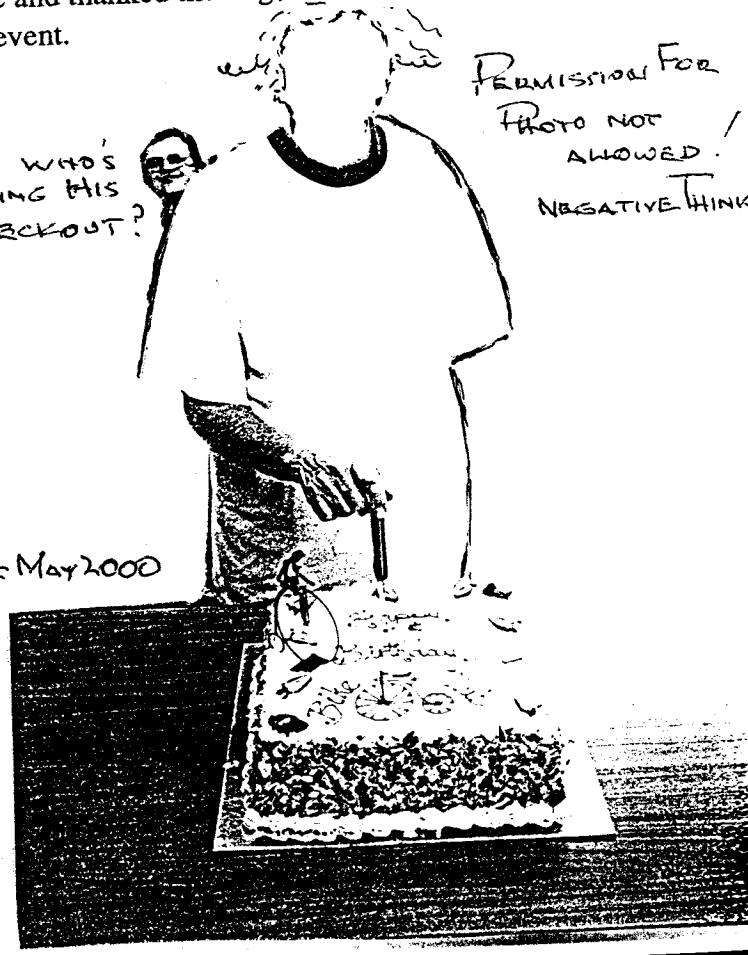
Tom Atkinson

Nice one Tom.

GUESS WHO'S
STICKING HIS
NECK OUT?

PERMISSION FOR
PHOTO NOT
ALLOWED!
NEGATIVE THINK

REF May 2000



SUNDAY 10th JUNE

TIME 10AM DEPART 10.30AM PROMPTLY

STARTING POINT RIDE AROUND

GUILDFORD

START OPPOSITE ROSS HADDONS

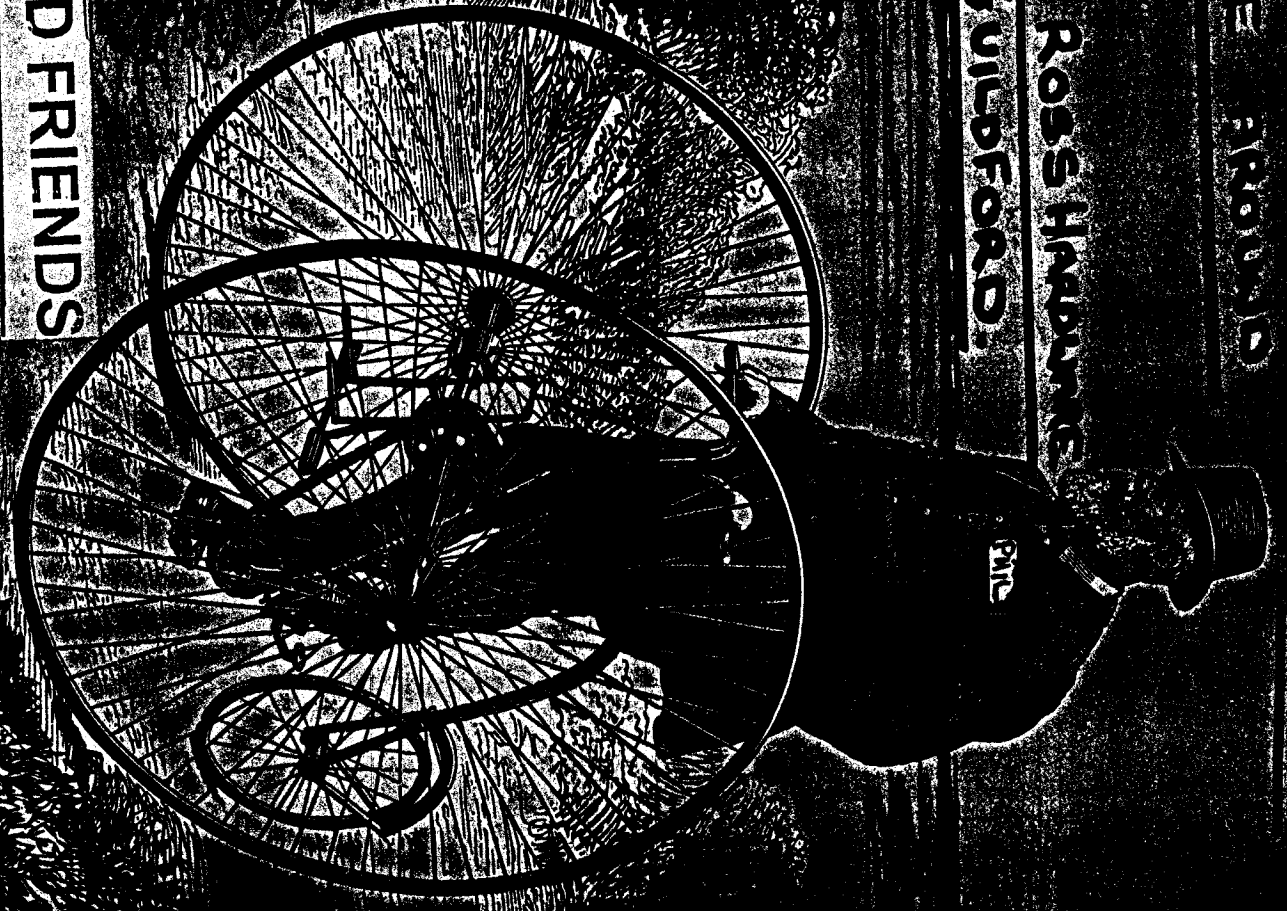
JAMES STREET GUILDFORD.

CONTRIBUTORS REQUIRED

BICYCLES

GENERAL INFORMATION

MEMBERS, FAMILY AND FRIENDS



THE HISTORICAL CYCLING CLUB OF WESTERN AUSTRALIA

WESTERN AUSTRALIA

WESTERN AUSTRALIA

WESTERN AUSTRALIA

WESTERN AUSTRALIA

WESTERN AUSTRALIA

WESTERN AUSTRALIA

WESTERN AUSTRALIA

WESTERN AUSTRALIA

WESTERN AUSTRALIA

WESTERN AUSTRALIA