

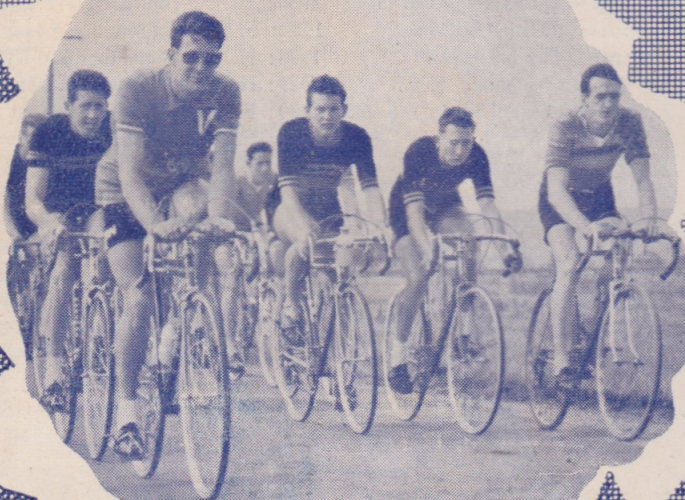
THE LEAGUE OF W.A. WHEELMEN

58th

presents the

**Beverley to
Perth Road Race**

108 Mls.



SATURDAY, SEPTEMBER 23rd, 1967

Commencing Beverley 10.30 a.m.
Finishing at Railway Hotel, West Midland, at approx. 3.30 p.m.

10c

PAST PERFORMANCES

PREVIOUS WINNERS

1897 J. Beck (45min.) 6.47.30
 1898: J. Bigwood (32min.) 7.16.0
 1899: W. Burville (60min.) 8.29.0
 1900: No race
 1901: A. Jewell (scr.) 6.46.57
 1902: No race
 1903: N. Salamons (30 mins.) 6.57.24
 1904: T. W. Simpson (7min.) 8.27.26
 1905: C. Howard (21min.) 8.50.30
 1906: A. E. Wright (5min.) 6.10.38
 1907: G. Beardon (60min.) 7.0.0
 1908: C. Pegler (26min.) 6.4.30
 1909: A. Pianta (18min.) 6.0.30
 1910: C. J. Senior (30min.) 7.10.0
 1911: E. M. Gray (45min.) 6.2.0
 1912: A. Wann (22min.) 6.26.5
 1913: M. Wann (35min.) 6.22.22
 1920: T. Bridges (50min.) 7.2.10
 1921: E. Eagles (35min.) 6.42.45
 1922: J. W. Haydon (45min.) 7.11.6
 1923: H. Williams (40min.) 6.10.10
 1924: K. Block (42min.) 6.12.15
 1925: R. Foy (34min.) 5.57.5
 1926: K. Mellows (30min.) 6.40.45
 1927: F. Jones (16min.) 5.35.0
 1928: G. Pratt (40min.) 6.39.10
 1929: W. Pender (36min.) 5.33.56
 1930: J. R. Mouldsdales (25min.) 6.16.53
 1931: E. Willis (38min.) 6.27.59
 1932: J. Williams (44min.) 6.17.3
 1933: R. Pingelly (30min.) 6.16.50
 1934: Replaced by 2-day test race
 1935: R. Logue (48min.) 5.40.8
 1936: A. W. Snelgar (35min.) 6.23.10
 1937: W. J. Maher (90min.) 6.23.40
 1938: J. H. Hall (42min.) 5.39.32
 1939: F. Bassula (18min.) 5.35.58
 1940: W. A. Bonser (33min.) 5.35.25
 1941: W. Kyrwood (26min.) 6.7.30
 1946: W. McWhirter (15min.) 5.29.58
 1947: A. R. Priestley (19min.) 5.32.18
 1948: D. Dawson (13min.) 5.33.20
 1949: G. Gerrard (21min.) 5.32.10
 1950: W. Corti (10min.) 5.36.50
 1951: D. Wilson (12½min.) 5.37.23
 1952: F. Suckling (12½min.) 5.5.12
 1953: C. Tregelles (32min.) 5.17.41
 1954: J. Barron (38min.) 4.53.05
 1955: E. O'Hara (20min.) 5.12.46.
 1956: John Oliver (scr.) 5.3.12.
 1957: R. Cotter (25min.) 4.56.0.
 1958: B. Dawson (35min.) 4.38.40.
 1959: J. Panto (38min.) 5.25.35.
 1960: R. Floyd (37min.) 5.10.8.
 1961: A. Kinghorn (46min.) 5.8.16.
 1962: D. Knowles (31min.) 5.2.37.
 1963: L. Suckling (4min.) 4.19.0.
 1964: B. Barron (scr.) 4.47.23.
 1965: M. Martino (scr.) 4.38.17.
 1966: L. Tognolini (scr.) 4.53.34.

FASTEST TIMES

1897: J. Beck (45min.) 6.47.30
 1898: A. E. Brown (5min.) 7.5.30
 1899: J. Beck (scr.) 8.5.20
 1900: No race.
 1901: A. Jewel (scr.) 6.46.57
 1902: No race
 1903: O. Prowse (scr.) 6.38.57
 1904: T. W. Simpson (7min.) 8.27.26
 1905: A. E. Wright (1min.) 8.41.25
 1906: A. E. Wright (5min.) 6.10.38
 1907: A. McDonald (scr.) 6.36.15
 1908: W. J. Maher (12min.) 6.1.33
 1909: A. Pianta (18min.) 6.0.30
 1910: C. J. Senior (30min.) 7.10.0
 1911: A. Kaiser (17min.) 5.58.33
 1912: E. M. Gray (5min.) 6.23.30
 1913: A. Wann (scr.) 6.8.53
 1920: A. Schulze (scr.) 6.17.40
 1921: A. Schulze (scr.) 6.27.36
 1922: A. Schulze (scr.) 6.45.0
 1923: H. Williams (40min.) 6.10.10
 1924: K. Block (42min.) 6.10.10
 1925: W. E. Marshall (6min.) 5.42.25
 1926: H. K. Smith (scr.) 6.19.55
 1927: F. Jones (16min.) 5.35.0
 1928: H. Marshall (scr.) 6.1.12
 1929: H. Marshall (scr.) 5.21.14
 1930: F. Jones (3min.) 6.1.40
 1931: F. Jones (scr.) 5.59.29
 1932: A. Hargraves (10min.) 5.50.50 3/5
 1933: W. Pender (5min.) 5.56.58
 1934: Replaced by 2-day test race
 1935: D. Tosland (scr.) 5.15.38
 1936: G. Hebbard (2½min.) 6.5.10
 1937: W. R. Appleton (4min.) 5.12.25
 1938: M. Martin (7½min.) 5.26.10
 1939: C. M. Haupt (scr.) 5.28.52
 1940: W. A. Bonser (33min.) 5.35.25
 1941: W. A. Bonser (scr.) 5.51.46
 1946: E. Barron (scr.) 5.22.10
 1947: W. Bonser (scr.) 5.22.12
 1948: E. Barron (scr.) 5.28.46
 1949: A. Kearns (scr.) 5.24.16
 1950: T. Hunter (4min.) 5.31.55
 1951: N. Burdus (scr.) 5.29.46
 1952: N. Burdus (scr.) 4.57.45
 1953: L. Suckling (10) 4.56.33
 1954: Jim Oliver (scr.) 4.19.30
 1955: P. Panton (10min.) 5.2.46.
 1956: John Oliver (scr.) 5.3.12.
 1957: John Oliver (scr.) 4.42.20.
 1958: P. Panton (scr.) 4.15.22.
 1959: I. Campbell (scr.) 4.51.36.
 1960: A. Perejuan (scr.) 4.57.40.
 1961: L. Suckling (scr.) 4.40.10.
 1962: D. Bentley (8min.) 4.40.38.
 1963: L. Suckling (4min.) 4.19.0.
 1964: B. Barron (scr.) 4.47.23.
 1965: M. Martino (scr.) 4.38.17.
 1966: L. Tognolini (scr.) 4.53.34.

HANDICAPS:

Scratch:

1. J. Crocker
2. R. Burton
3. B. Barron
4. L. Tognolini

12 minutes:

5. C. McLennon
6. L. Johnson
7. G. Whologan
8. A. Goodchild

18 minutes:

9. J. Tognolini
10. S. Perks
11. R. Sweeney
12. R. Floyd

25 minutes:

13. E. O'Hara
14. W. Williams
15. G. Bilton
16. L. Fardill

32 minutes:

17. G. Jack
18. R. Taylor
19. L. Barron
20. R. Allen
21. A. Bishop
22. J. Cecconi
23. C. Gilmour
24. D. Knowles

54 minutes:

25. B. Thomas
26. J. Barron
27. R. Davies
28. R. Mason

1st 2nd 3rd 4th
 5th 6th 7th 8th
 Fastest Time 2nd Fastest time

PRIZE LIST::

1st: \$120 and Beverley Sash. 7th: Open Order on H. D. Stallard
 2nd: \$40 8th: Open Order on Boans Ltd.
 3rd: \$20 donated by Armstrong Fastest Time: \$40 and Sash.
 Dimmit Pty. Ltd. 2nd Fastest Time: \$10
 4th: \$10 Oldest Rider: Prize donated by J.
 5th: \$6 Harris
 6th: \$4 donated by Shire of Toodyay.

Claims Steward: Mr. Des Barron

THE COURSE:

Beverley - York - Northam - Bailup - Gidgegannup - Red Hill - Midland

FEEDING ARRANGEMENTS:

Riders may take refreshments at any stage of the race other than from Gidgegannup to the finish line. Refreshments cannot be accepted from a moving vehicle and must be in a non-beakable container.

PRESENTATION OF PRIZES:

4.30 p.m., Hotel, by Mr. A. Charleson

THE LEAGUE OF W.A. WHEELMEN

Patron: Douglas Cash, Esq. President: E. Barron
 Secretary: C. F. Roberts Treasurer: R. Cecconi

DONORS:

The League of W.A. Wheelmen desires to express its thanks to the following donors who by their assistance have made this race possible:
 A. Charleson, Armstrong-Dimmit Pty. Ltd., H. D. Stallard, Boans Ltd., J. Whologan, Swan Brewery, J. Harris, Shire of Toodyay



**MIDLAND
SPORTING
HOTEL**

The Home of Cycling and Trotting

The Railway

(ALF CHARLESON, Patron M.B.C.C.)

GREAT EASTERN HIGHWAY, WEST MIDLAND

Spacious Air Conditioned Winter Lounge
Counter Lunch 12.30 to 1.30 p.m.
Dancing and Entertainment Friday and Saturday

PHONE: 74 1433

Licensee: ERIC NICHOLLS

NO BATTERY UNDERSELLS MASSE



12 Volt Battery
Guaranteed For

2 Years \$14.00
3 Years \$16.40
4 Years \$18.80

MASSE BATTERIES PTY. LTD.

BATTERY SERVICE STATION

Cnr. BREWER and STIRLING STREETS, PERTH

PHONE: 28 4207

("Swan Express" Print, Midland, 74 1404)