

THE LEAGUE OF W.A. WHEELMEN

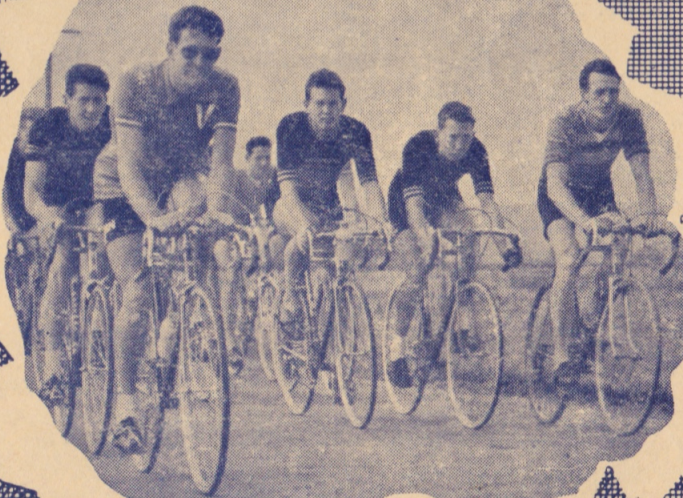
56th

presents the

*Beverley to
Perth Road Race*

108 Mls.

14 Finished



Saturday, September 18th, 1965

Commencing Beverley 10.30 a.m.

Finishing at Railway Hotel, West Midland, at approx. 3.30 p.m.

1/-

PAST PERFORMANCES

PREVIOUS WINNERS

1897: J. Beck (45min.) 6.47.30
 1898: J. Bigwood (32min.) 7.16.0
 1899: W. Burville (60min.) 8.29.0
 1900: No race
 1901: A. Jewell (scr.) 6.46.57
 1902: No race
 1903: N. Salamons (30 mins.) 6.57.24
 1904: T. W. Simpson (7min.) 8.27.26
 1905: C. Howard (21min.) 8.50.30
 1906: A. E. Wright (5min.) 6.10.38
 1907: G. Bearden (60min.) 7.0.0
 1908: C. Pegler (26min.) 6.4.30
 1909: A. Pianta (18min.) 6.0.30
 1910: C. J. Senior (30min.) 7.10.0
 1911: E. M. Gray (45min.) 6.2.0
 1912: A. Wann (22min.) 6.26.5
 1913: M. Wann (35min.) 6.22.22
 1920: T. Bridges (50min.) 7.2.10
 1921: E. Eagles (35min.) 6.42.45
 1922: J. W. Haydon (45min.) 7.11.6
 1923: H. Williams (40min.) 6.10.10
 1924: K. Block (42min.) 6.12.15
 1925: R. Foy (34min.) 5.57.5
 1926: K. Mellows (30min.) 6.40.45
 1927: F. Jones (16min.) 5.35.0
 1928: G. Pratt (40min.) 6.39.10
 1929: W. Pender (36min.) 5.33.56
 1930: J. R. Mouldsdale (25min.) 6.16.53
 1931: E. Willis (38min.) 6.27.59
 1932: J. Williams (44min.) 6.17.3
 1933: R. Pingelly (30min.) 6.16.50
 1934: Replaced by 2-day test race
 1935: R. Logue (48min.) 5.40.8
 1936: A. W. Snelgar (35min.) 6.23.10
 1937: W. J. Maher (90min.) 6.23.40
 1938: J. H. Hall (42min.) 5.39.32
 1939: F. Bassula (18min.) 5.35.58
 1940: W. A. Bonser (3½min.) 5.35.25
 1941: W. Kyrwood (26min.) 6.7.30
 1946: W. McWhirter (15min.) 5.29.58
 1947: A. R. Priestley (19min.) 5.32.18
 1948: D. Dawson (13min.) 5.33.20
 1949: G. Gerrard (21min.) 5.32.10
 1950: W. Corti (10min.) 5.36.50
 1951: D. Wilson (12½min.) 5.37.23
 1952: F. Suckling (12½min.) 5.5.12
 1953: C. Tregelles (32min.) 5.17.41
 1954: J. Barron (38min.) 4.53.05
 1955: E. O'Hara (20min.) 5.12.46
 1956: John Oliver (scr.) 5.3.12
 1957: R. Cotter (25min.) 4.56.0
 1958: B. Dawson (35min.) 4.38.40
 1959: J. Panto (38min.) 5.25.35
 1960: R. Floyd (37min.) 5.10.8
 1961: A. Kinghorn (46min.) 5.8.16
 1962: D. Knowles (31min.) 5.2.37
 1963: L. Suckling (4min.) 4.19.0
 1964: B. Barron (scr.) 4.47.23

FASTEST TIMES

1897: J. Beck (45min.) 6.47.30
 1898: A. E. Brown (5min.) 7.5.30
 1899: J. Beck (scr.) 8.5.20
 1900: No race.
 1901: A. Jewel (scr.) 6.46.57
 1902: No race
 1903: O. Prowse (scr.) 6.38.57
 1904: T. W. Simpson (7min.) 8.27.26
 1905: A. E. Wright (1min.) 8.41.25
 1906: A. E. Wright (5min.) 6.10.38
 1907: A. McDonald (scr.) 6.36.15
 1908: W. J. Maher (12min.) 6.1.33
 1909: A. Pianta (18min.) 6.0.30
 1910: C. J. Senior (30min.) 7.10.0
 1911: A. Kaiser (17min.) 5.58.33
 1912: E. M. Gray (5min.) 6.23.30
 1913: A. Wann (scr.) 6.8.53
 1920: A. Schulze (scr.) 6.17.40
 1921: A. Schulze (scr.) 6.27.36
 1922: A. Schulze (scr.) 6.45.0
 1923: H. Williams (40min.) 6.10.10
 1924: K. Block (42min.) 6.10.10
 1925: W. E. Marshall (6min.) 5.42.25
 1926: H. K. Smith (scr.) 6.19.55
 1927: F. Jones (16min.) 5.35.0
 1928: H. Marshall (scr.) 6.1.12
 1929: H. Marshall (scr.) 5.21.14
 1930: F. Jones (3min.) 6.1.40
 1931: F. Jones (scr.) 5.59.29
 1932: A. Hargraves (10min.) 5.50.50 3/5
 1933: W. Pender (5min.) 5.56.58
 1934: Replaced by 2-day test race
 1935: D. Tosland (scr.) 5.15.38
 1936: G. Hebbard (2½min.) 6.5.10
 1937: W. R. Appleton (4min.) 5.12.25
 1938: M. Martin (7½min.) 5.26.10
 1939: C. M. Haupt (scr.) 5.28.52
 1940: W. A. Bonser (3½min.) 5.53.25
 1941: W. A. Bonser (scr.) 5.51.46
 1946: E. Barron (scr.) 5.22.10
 1947: W. Bonser (scr.) 5.22.12
 1948: E. Barron (scr.) 5.28.46
 1949: A. Kearns (scr.) 5.24.16
 1950: T. Hunter (4min.) 5.31.55
 1951: N. Burdus (scr.) 5.29.46
 1952: N. Burdus (scr.) 4.57.45
 1953: L. Suckling (10) 4.56.33
 1954: Jim Oliver (scr.) 4.19.30
 1955: P. Panton (10min.) 5.2.46
 1956: John Oliver (scr.) 5.3.12
 1957: John Oliver (scr.) 4.42.20
 1958: P. Panton (scr.) 4.15.22
 1959: I. Campbell (scr.) 4.51.36
 1950: A. Perejuan (scr.) 4.57.40
 1961: L. Suckling (scr.) 4.40.10
 1962: D. Bentley (8min.) 4.40.38
 1963: L. Suckling (4min.) 4.19.0
 1964: B. Barron (scr.) 4.47.23

HANDICAPS

Scratch:

1. M. Mortino (Vic.)
2. B. Barron
3. B. Walker (N.S.W.)
4. S. Bonser
5. L. Tognolini
6. R. Burton
7. C. Rossiter

20 minutes:

8. K. Norris
9. M. Migator
10. J. Ward
11. S. Richards

25 minutes:

12. D. Bentley
13. L. Johnson
14. R. Williams (N.S.W.) 10
15. J. Baker

30 minutes:

16. D. Florion
17. D. Knowles
18. T. Lyons
19. A. Riddle

35 minutes:

20. R. Smeets
21. F. Bowra
22. B. Sweeny
23. W. McWhirter

40 minutes:

24. D. Williams
25. J. Barron
26. E. Rampellini
27. T. Hindmarsh

46 minutes:

28. A. Bishop 11
29. B. Paxman
30. J. Cuccovici

50 minutes:

31. C. Gilmore
32. R. Allen
33. L. Enright 12

1. MARTINO 2. BARRON 3. LYONS 4. TOGNOLINI
 5. SMEETS 6. B. WALKER Fastest Time MARTINO

PRIZE LIST: 2nd B. BARRON

1st: £75 and Sash.
 2nd: £25.
 3rd: £10.
 4th: £5.
 5th: £2/2/- Open Order on H. D. Stallard Cycles.
 6th: £2/2/- Open Order on Boans Ltd.
 Oldest Rider: Prize donated by Neil Richards, £2. WILLIAMS
 Fastest Time: £25 and Sash. MARTINO.

THE COURSE:

Beverley - York - Northam - Toodyay - Bailup - Gidgegannup
 Red Hill - Midland

FEEDING ARRANGEMENTS:

Riders may take refreshments at any stage of the race other than from the peak of Red Hill to the finish line. Refreshments cannot be accepted from a moving vehicle and must be in a non breakable container

BUFFET TEA AND PRESENTATION OF PRIZES

5 p.m., Hotel, by U. Tognolini, President L.W.A.W.

THE LEAGUE OF W.A. WHEELMEN:

Patron: Douglas Cash, Esq. President: U. Tognolin
 Secretary: R. B. Steele. Treasurer: G. Whologan

DONORS:

The League of W.A. Wheelmen desires to express its thanks to the following donors who by their assistance have made this race possible:
 T. E. Wardle Pty. Ltd., A. Charleson, Ascot Cycles, H. D. Stallard, Boans Ltd., Neil Richards, J. Whologan, Swan Brewery, J. Harris, D. Cash, J. Bailey



100 Stores
Throughout
Australia

AUSTRALIA-WIDE POLICY

LOW PRICES ON **EACH** ITEM **EVERY** WEEK